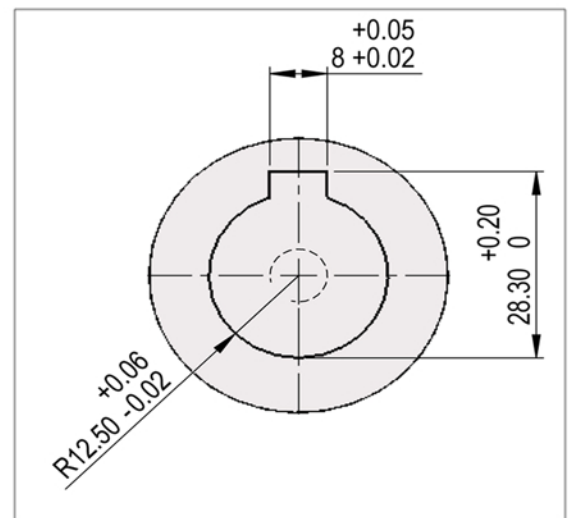
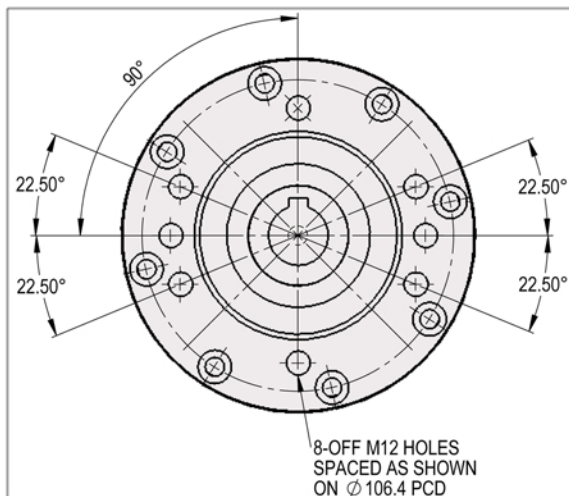
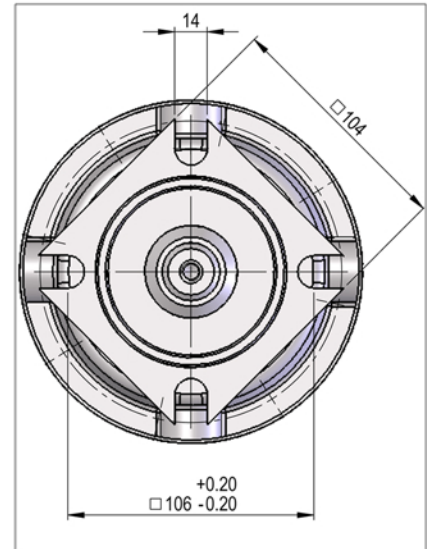
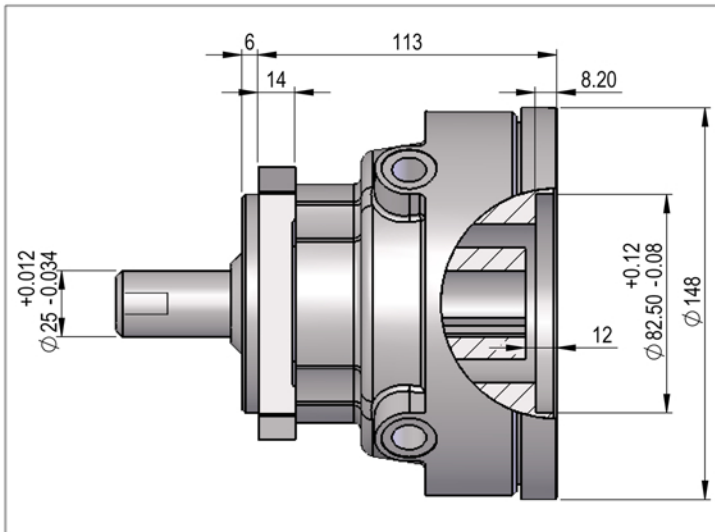




## Hydraulic Brake

## ZDQ2



### Hydraulic Disc Brake

Weight: 8.5Kg

**Technical Specification:** The brake is designed to be fail safe and requires a pilot signal from the hydraulic system to release. The brake is supplied dry and requires filling with oil after assembly with the motor. The mounting flange is designed to accept the BMP and BMR range of motors.

