

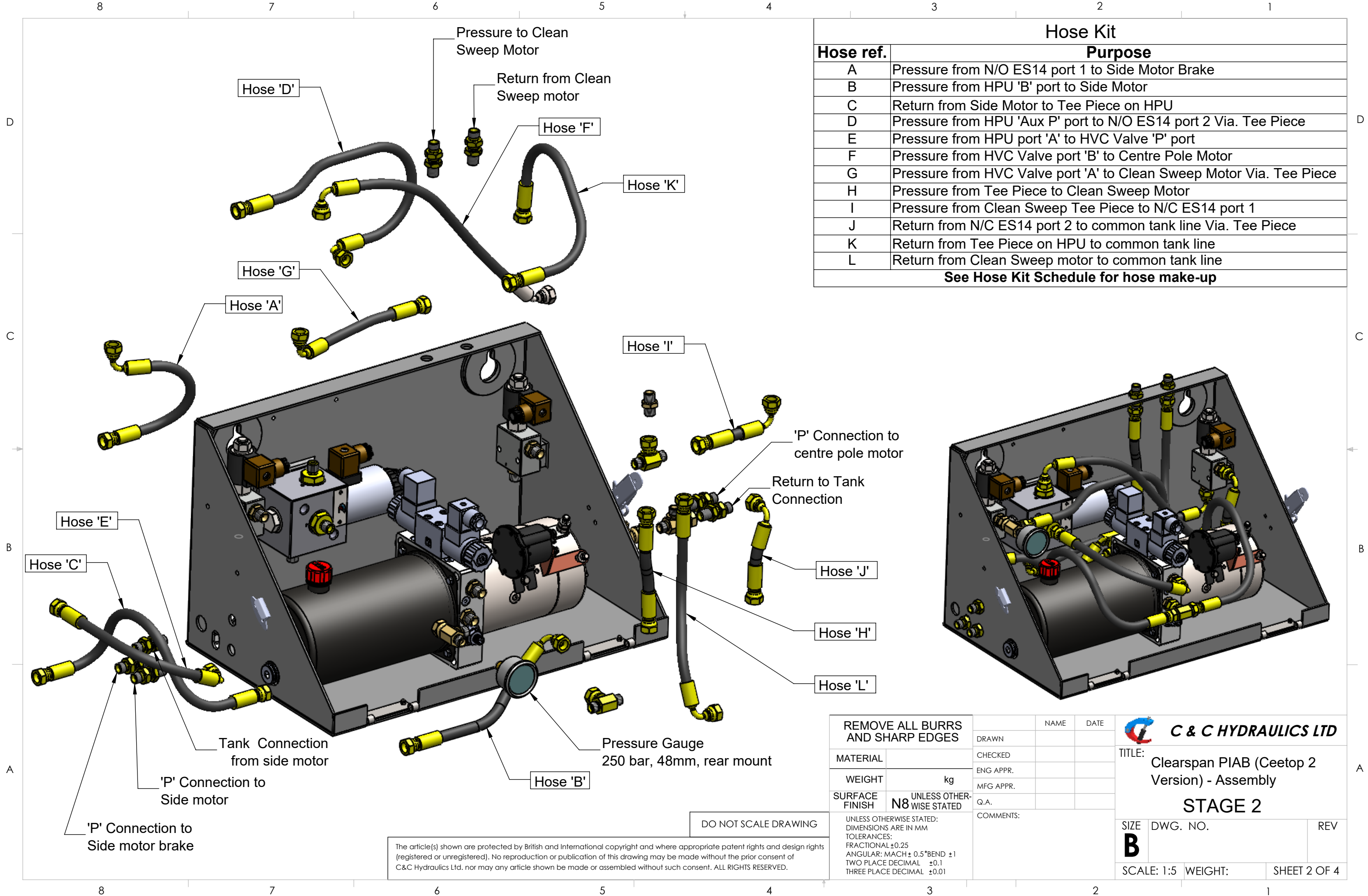
ITEM NO.	PART NUMBER	DESCRIPTION	Quan.
1	HPU & Valve Housing	Base Fabrication Assembly	1
2	HVC-32-10-N	Diverter Valve	1
3	ES14-NC-24V Assembly	1/4" Normally Closed Valve	1
4	ES14-N.O-24V Assembly	1/4" Normally Open Valve	1
5	1/2 Dowty Washer		3
6	M10 x 20 long	Button Head Hex Skt Cap Screw	2
7	14 DOWTY WASHER	Bonded Seal	8
8	1-4 BSP ADAPTOR	1/4 x 1/4 Straight Adaptor	8
9	1/2 - 1/4 Adaptor	1/4 - 1/2 Straight Adaptor	3
10	YBZ5-E2.7Y2A4-WUBBT1	Hydraulic Power Unit (2kw)	1
11	PRESSURE GAUGE 250 Bar-Rear Mount-48mm	Pressure Gauge	1

REMOVE ALL BURRS AND SHARP EDGES		DRAWN	NAME	DATE	 C & C HYDRAULICS LTD TITLE: Clearspan PIAB (Ceetop 2 Version) - Assembly STAGE 1
MATERIAL		CHECKED			
WEIGHT	kg	ENG APPR.			
SURFACE FINISH	N8 UNLESS OTHERWISE STATED	MFG APPR.			
		Q.A.			
		COMMENTS:			SIZE B DWG. NO. REV
		SCALE: 1:5		WEIGHT:	SHEET 1 OF 4

DO NOT SCALE DRAWING

The article(s) shown are protected by British and International copyright and where appropriate patent rights and design rights (registered or unregistered). No reproduction or publication of this drawing may be made without the prior consent of C&C Hydraulics Ltd. nor may any article shown be made or assembled without such consent. ALL RIGHTS RESERVED.

UNLESS OTHERWISE STATED:
 DIMENSIONS ARE IN MM
 TOLERANCES:
 FRACTIONAL ±0.25
 ANGULAR: MACH ± 0.5° BEND ±1
 TWO PLACE DECIMAL ±0.1
 THREE PLACE DECIMAL ±0.01



Hose Kit	
Hose ref.	Purpose
A	Pressure from N/O ES14 port 1 to Side Motor Brake
B	Pressure from HPU 'B' port to Side Motor
C	Return from Side Motor to Tee Piece on HPU
D	Pressure from HPU 'Aux P' port to N/O ES14 port 2 Via. Tee Piece
E	Pressure from HPU port 'A' to HVC Valve 'P' port
F	Pressure from HVC Valve port 'B' to Centre Pole Motor
G	Pressure from HVC Valve port 'A' to Clean Sweep Motor Via. Tee Piece
H	Pressure from Tee Piece to Clean Sweep Motor
I	Pressure from Clean Sweep Tee Piece to N/C ES14 port 1
J	Return from N/C ES14 port 2 to common tank line Via. Tee Piece
K	Return from Tee Piece on HPU to common tank line
L	Return from Clean Sweep motor to common tank line
See Hose Kit Schedule for hose make-up	

REMOVE ALL BURRS AND SHARP EDGES

MATERIAL

WEIGHT kg

SURFACE FINISH N8 UNLESS OTHERWISE STATED

UNLESS OTHERWISE STATED:
 DIMENSIONS ARE IN MM
 TOLERANCES:
 FRACTIONAL ±0.25
 ANGULAR: MACH ± 0.5° BEND ±1
 TWO PLACE DECIMAL ±0.1
 THREE PLACE DECIMAL ±0.01

	NAME	DATE
DRAWN		
CHECKED		
ENG APPR.		
MFG APPR.		
Q.A.		
COMMENTS:		

C & C HYDRAULICS LTD

TITLE: Clearspan PIAB (Ceetop 2 Version) - Assembly

STAGE 2

SIZE B	DWG. NO.	REV
SCALE: 1:5	WEIGHT:	SHEET 2 OF 4

DO NOT SCALE DRAWING

The article(s) shown are protected by British and International copyright and where appropriate patent rights and design rights (registered or unregistered). No reproduction or publication of this drawing may be made without the prior consent of C&C Hydraulics Ltd. nor may any article shown be made or assembled without such consent. ALL RIGHTS RESERVED.

8 7 6 5 4 3 2 1

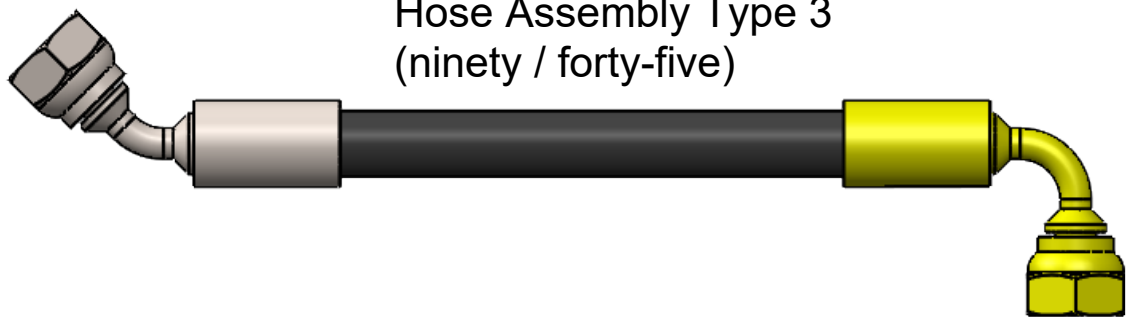
Hose Assembly Type 1
(straight / straight)



Hose Assembly Type 2
(straight / ninety)



Hose Assembly Type 3
(ninety / forty-five)




Hose ref.	Hose Type	Hose cut length	Fitting 1	Fitting 2
A	2	275mm	1/4" straight (SC)	1/4" swept 90°
B	2	240mm	1/4" straight (SC)	1/4" swept 90°
C	1	450mm	1/4" straight (SC)	1/4" straight (SC)
D	2	230mm	1/4" straight (SC)	1/4" swept 90°
E	2	240mm	1/4" straight (SC)	1/4" swept 90°
F	3	380mm	1/4" swept 90°	1/4" swept 45°
G	2	150mm	1/4" straight (SC)	1/4" swept 90°
H	1	150mm	1/4" straight (SC)	1/4" straight (SC)
I	2	65mm	1/4" straight (SC)	1/4" swept 90°
J	2	230mm	1/4" straight (SC)	1/4" swept 90°
K	1	600mm	1/4" straight (SC)	1/4" straight (SC)
L	2	250mm	1/4" straight (SC)	1/4" swept 90°

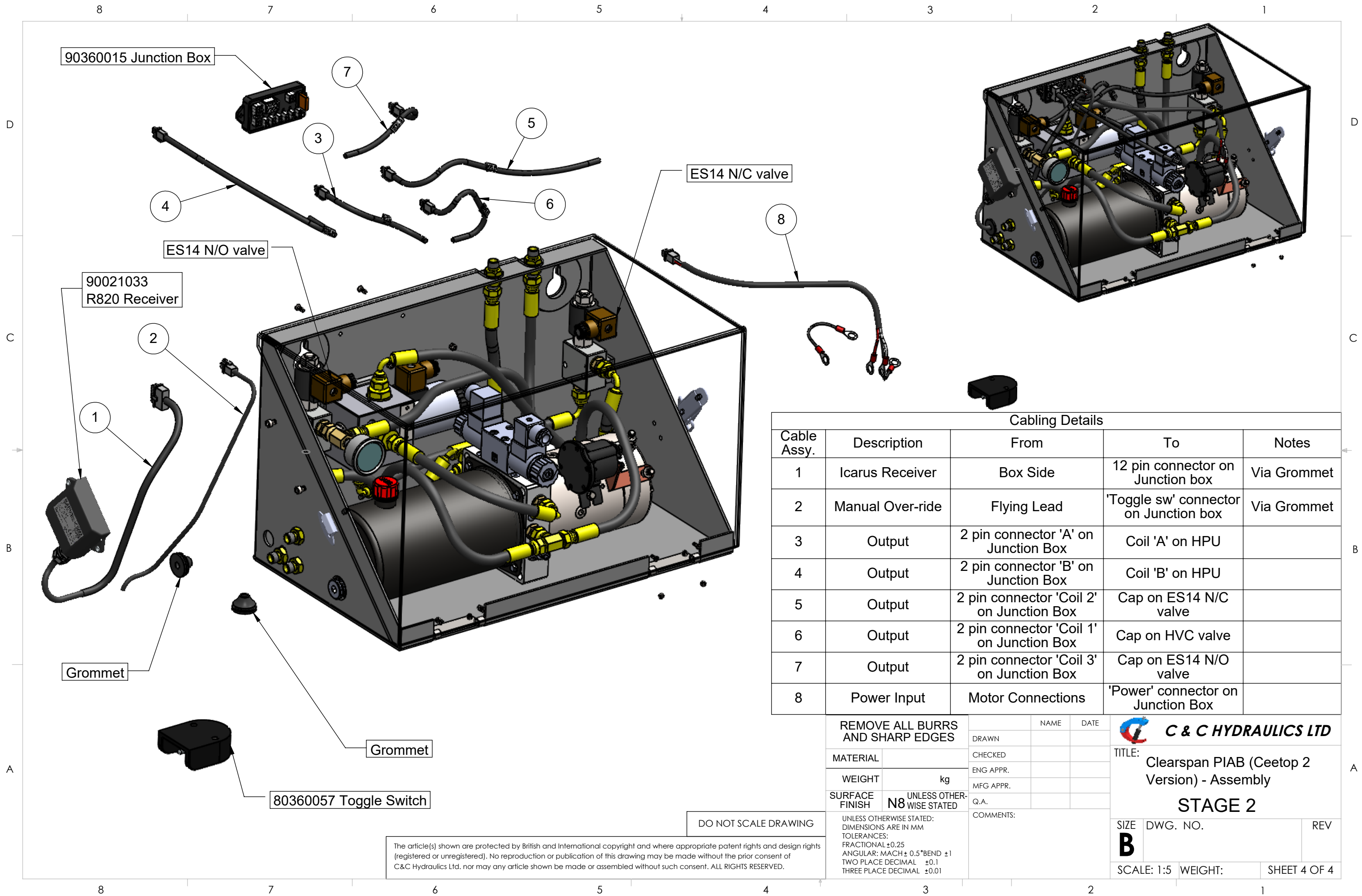
1. System Pressure is 170 bar
2. All fittings are 1/4" BSP
3. All hoses are 1/4" two wire

DO NOT SCALE DRAWING

The article(s) shown are protected by British and International copyright and where appropriate patent rights and design rights (registered or unregistered). No reproduction or publication of this drawing may be made without the prior consent of C&C Hydraulics Ltd. nor may any article shown be made or assembled without such consent. ALL RIGHTS RESERVED.

REMOVE ALL BURRS AND SHARP EDGES		DRAWN	NAME	DATE	 C & C HYDRAULICS LTD TITLE: Clearspan PIAB (Ceetop 2 Version) - Assembly Hose Kit Schedule
MATERIAL		CHECKED			
WEIGHT	kg	ENG APPR.			
SURFACE FINISH	N8 UNLESS OTHERWISE STATED	MFG APPR.			
		Q.A.			
		COMMENTS:			SIZE B DWG. NO. REV SCALE: 1:1.5 WEIGHT: SHEET 3 OF 4

8 7 6 5 4 3 2 1



Cabling Details				
Cable Assy.	Description	From	To	Notes
1	Icarus Receiver	Box Side	12 pin connector on Junction box	Via Grommet
2	Manual Over-ride	Flying Lead	'Toggle sw' connector on Junction box	Via Grommet
3	Output	2 pin connector 'A' on Junction Box	Coil 'A' on HPU	
4	Output	2 pin connector 'B' on Junction Box	Coil 'B' on HPU	
5	Output	2 pin connector 'Coil 2' on Junction Box	Cap on ES14 N/C valve	
6	Output	2 pin connector 'Coil 1' on Junction Box	Cap on HVC valve	
7	Output	2 pin connector 'Coil 3' on Junction Box	Cap on ES14 N/O valve	
8	Power Input	Motor Connections	'Power' connector on Junction Box	

REMOVE ALL BURRS AND SHARP EDGES

MATERIAL

WEIGHT kg

SURFACE FINISH N8 UNLESS OTHERWISE STATED

UNLESS OTHERWISE STATED: DIMENSIONS ARE IN MM TOLERANCES: FRACTIONAL ±0.25 ANGULAR: MACH ± 0.5° BEND ±1 TWO PLACE DECIMAL ±0.1 THREE PLACE DECIMAL ±0.01

NAME	DATE
DRAWN	
CHECKED	
ENG APPR.	
MFG APPR.	
Q.A.	
COMMENTS:	

C & C HYDRAULICS LTD

TITLE: Clearspan PIAB (Ceetop 2 Version) - Assembly

STAGE 2

SIZE B	DWG. NO.	REV
SCALE: 1:5	WEIGHT:	SHEET 4 OF 4

DO NOT SCALE DRAWING

The article(s) shown are protected by British and International copyright and where appropriate patent rights and design rights (registered or unregistered). No reproduction or publication of this drawing may be made without the prior consent of C&C Hydraulics Ltd. nor may any article shown be made or assembled without such consent. ALL RIGHTS RESERVED.