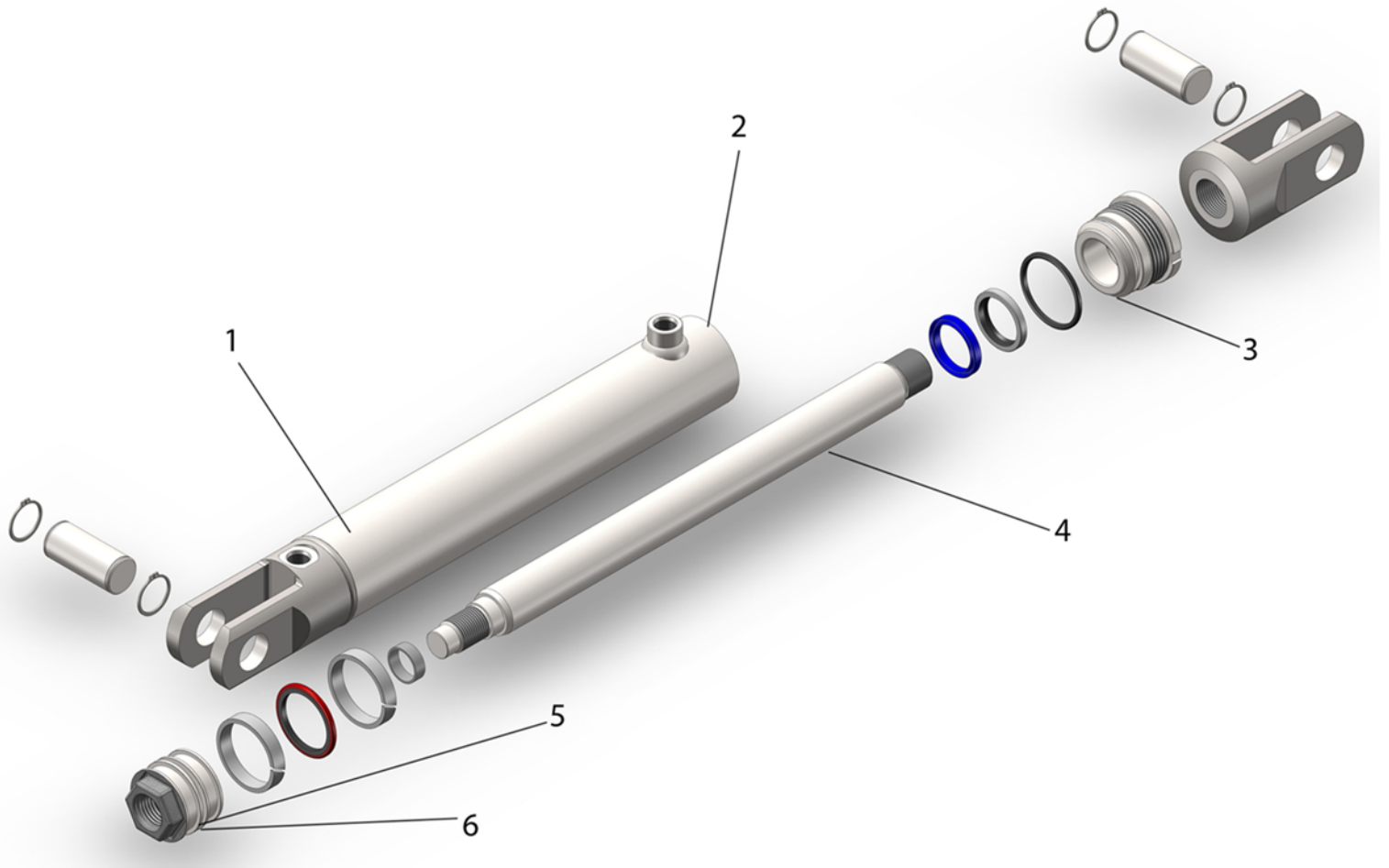




## Standard Agricultural Cylinder

## Technical Data

All our hydraulic cylinders are constructed using high quality materials and designed for heavy duty applications as standard.



1	Part number/week/year of manufacture are engraved onto the tube
2	Tube material:ST52.3 Smooth bore
3	Gland material: EN8DM steel, tufride hardened
4	Rod material CK45 hard chrome plated or stainless steel induction hardened
5	Patented locking system secures the piston to the rod
6	Piston materials forged C35R steel